



Scott McGihon

778.242.6764

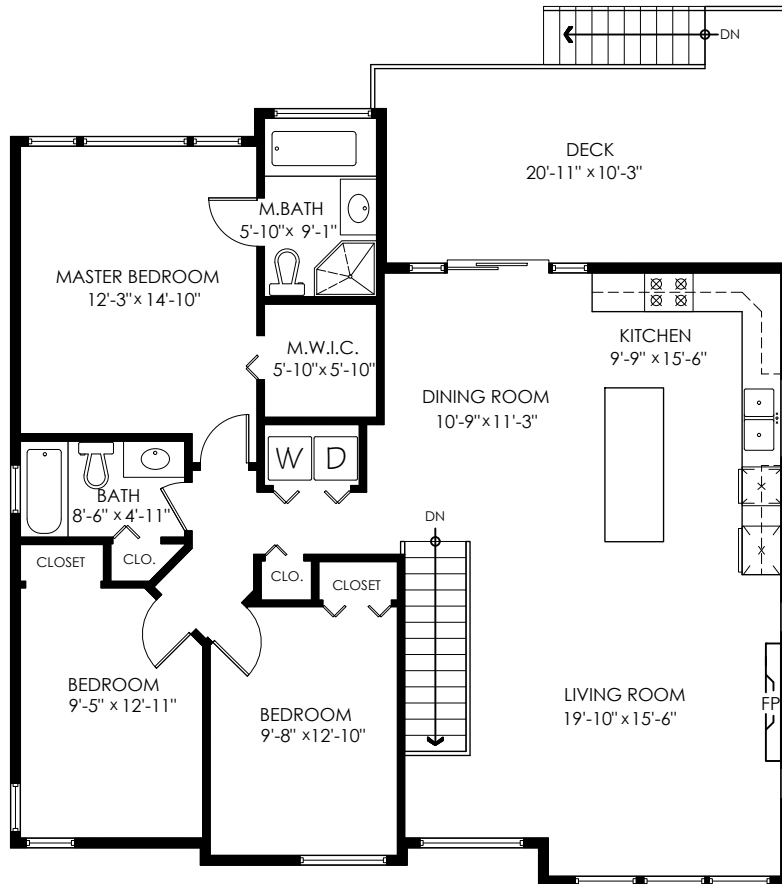
scottmcgihon@gmail.com

www.fixorfind.ca

27731 Lantern Avenue,
Abbotsford

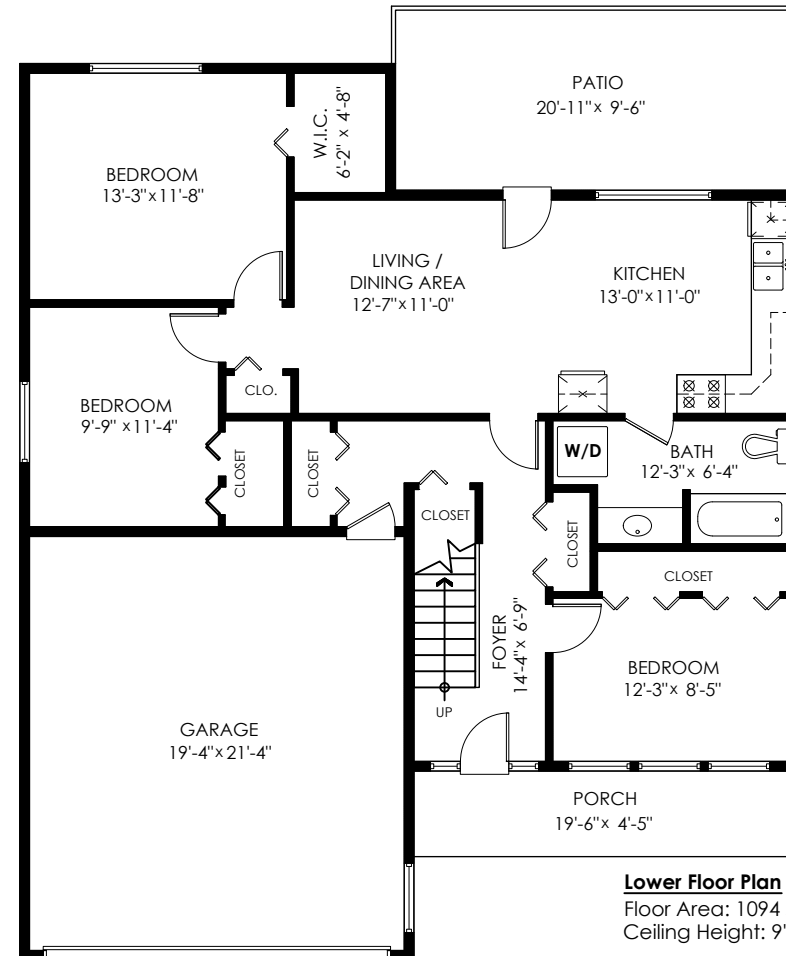
Main Floor:	1,395 sq.ft.
Lower Floor:	1,094 sq.ft.
Total:	2,489 sq.ft.

Garage:	439 sq.ft.
Patio:	194 sq.ft.
Deck:	229 sq.ft.
Porch:	86 sq.ft.
Total Extras:	948 sq.ft.



Main Floor Plan

Floor Area: 1395 sq.ft.
Ceiling Height: 9'



Lower Floor Plan

Floor Area: 1094 sq.ft.
Ceiling Height: 9'



cotala

E&O Insured. Total square foot calculated to gross unit area. \$QFT based on interior measurements to exterior walls, not taken from original blueprints, may include unfinished area.

This is for marketing purposes only and is not intended for architectural/construction use. All details, sizes & placements should be considered approximate within +/- 2% tolerance. www.PixlWorks.com

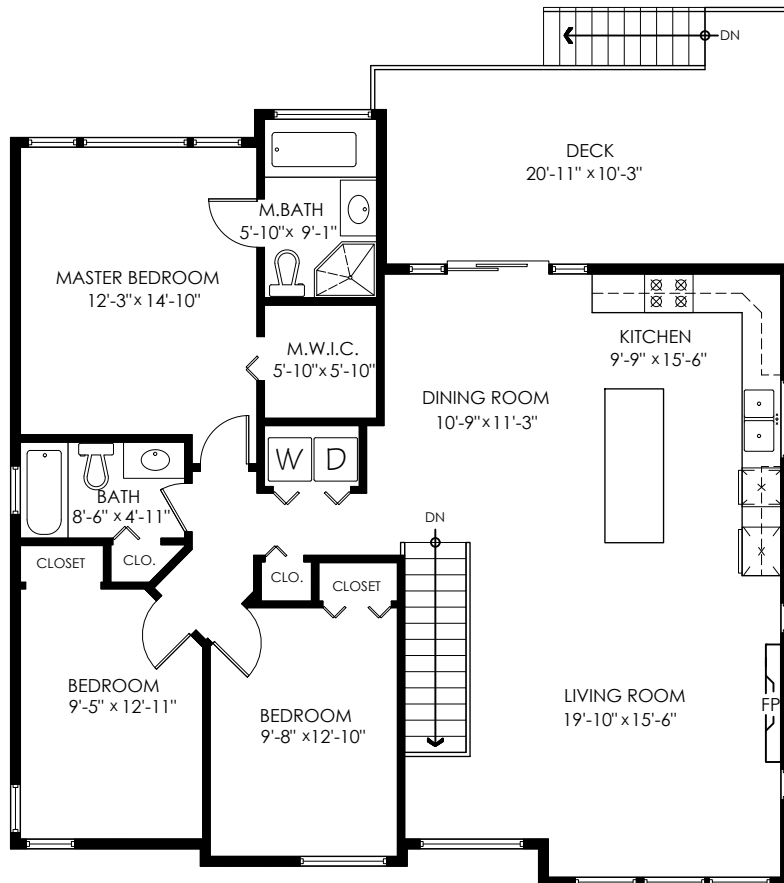
Measuring, Scanning, & Design | 604-329-5788



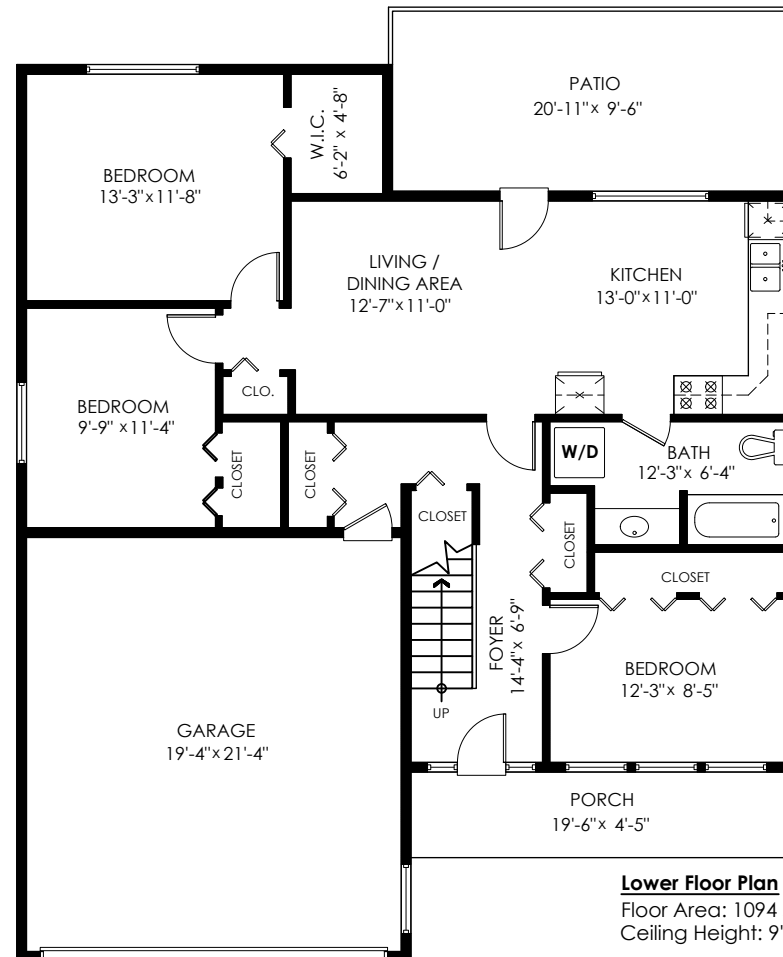
27731 Lantern Avenue, Abbotsford

Main Floor: 1,395 sq.ft.
 Lower Floor: 1,094 sq.ft.
Total: 2,489 sq.ft.

Garage: 439 sq.ft.
 Patio: 194 sq.ft.
 Deck: 229 sq.ft.
 Porch: 86 sq.ft.
Total Extras: 948 sq.ft.



Main Floor Plan
 Floor Area: 1395 sq.ft.
 Ceiling Height: 9'



Lower Floor Plan
 Floor Area: 1094 sq.ft.
 Ceiling Height: 9'





Houses:

Total square footage is calculated to the outside of exterior walls.

Room sizes are dimensioned to the inside of the walls. This is because you need to know what you can fit in that room. When you add up the total of the room sizes it will not equal the total square footage of the property. This method of adding up room sizes will not account for wall thickness, interior hallways, exterior wall thickness, closets and many other areas that are included is total sqft.

Any space that is not suitable for year-round use or has a ceiling height of less than 4 feet will not be considered living space. An example of this includes a deck, garage or attic. If there isn't heat, insulation or room for an adult to stand, then it will not be included in the living space.

Cantilevered fireplaces, chimneys and plant windows are also not considered living space.

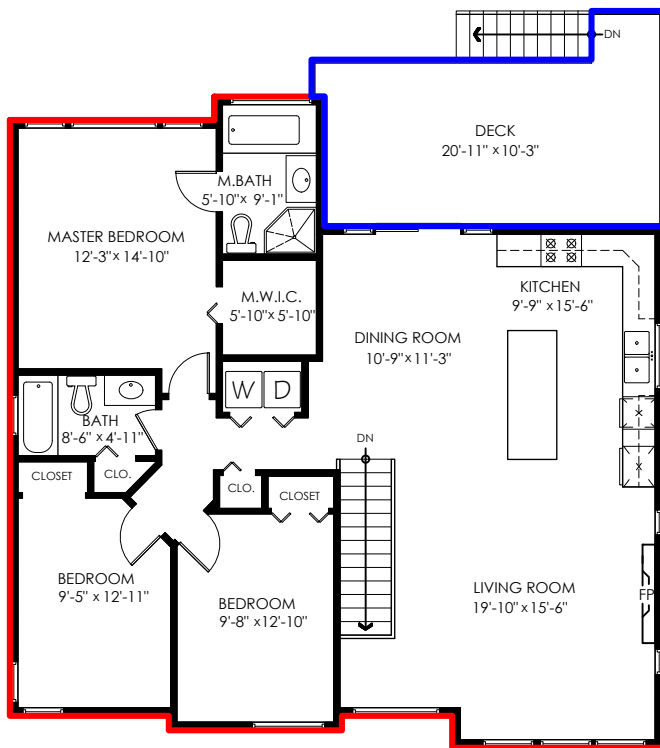
Included in the living space will be the measurements for stair treads for the floor they service as well as the space under the lowest floor's stairs.

Areas open to the floor below (also known as double height ceilings) are not considered living space because there is no floor.

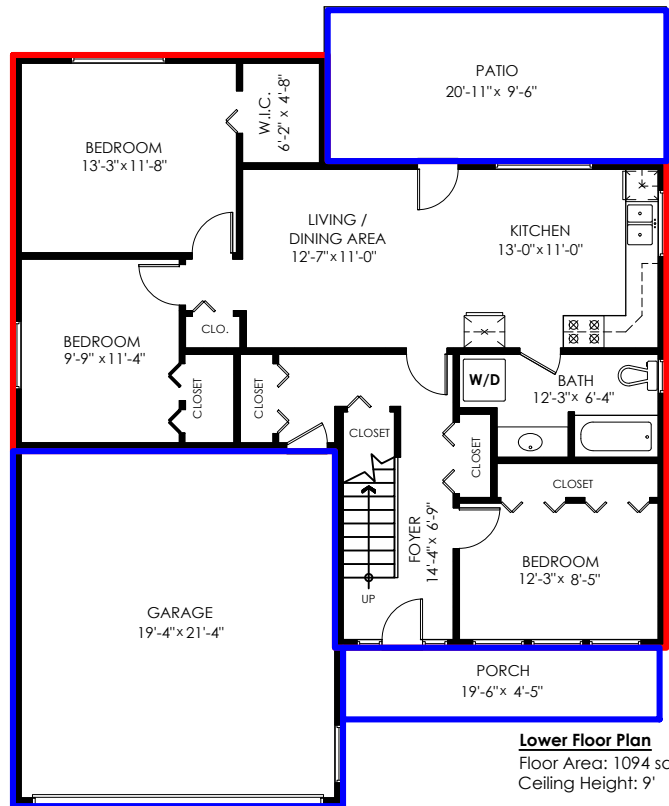
Main Floor:	1,395 sq.ft.
Lower Floor:	1,094 sq.ft.
Total:	2,489 sq.ft.

**27731 Lantern Avenue,
Abbotsford**

Garage:	439 sq.ft.
Patio:	194 sq.ft.
Deck:	229 sq.ft.
Porch:	86 sq.ft.
Total Extras:	948 sq.ft.



Main Floor Plan
Floor Area: 1395 sq.ft.
Ceiling Height: 9'



Lower Floor Plan
Floor Area: 1094 sq.ft.
Ceiling Height: 9'